

## Mail Host Settings (To Email Invoices Etc)

The generic mailer in AstarlaWorks Premier requires very simple setups to make it work as it does not rely on using MAPI Mail in Windows unless you tick the **Use Outlook To Send Mail** option.

To activate mail choose Our Company Details at the bottom left of the Administration section and fill in the Mail Host and your return email address as in figure one below To get these either contact your ISP (Internet Service Provider) or in Outlook choose Tools – Accounts – select the account you use (if more than one) – select Properties – then in the Servers tab you will see the Outgoing Mail (SMTP) as in Figure Two below. Copy this and paste it into the Mail Host (SMTP) field in Our Company Details.

Figure One

Company Details For ASTARLA In Folder \ASTARLA\ - Path Check D:\ACCOUNTS\AW\ASTARLA

**Bank Details Are In General Ledger Chart Of Accounts** Save

Name	Astarla Consulting Pty Ltd	Street	
Postal 1	PO Box 94	Suburb	Buderim
Postal 2	Buderim. QLD 4556	Country	Australia
Postal 3	AUSTRALIA		

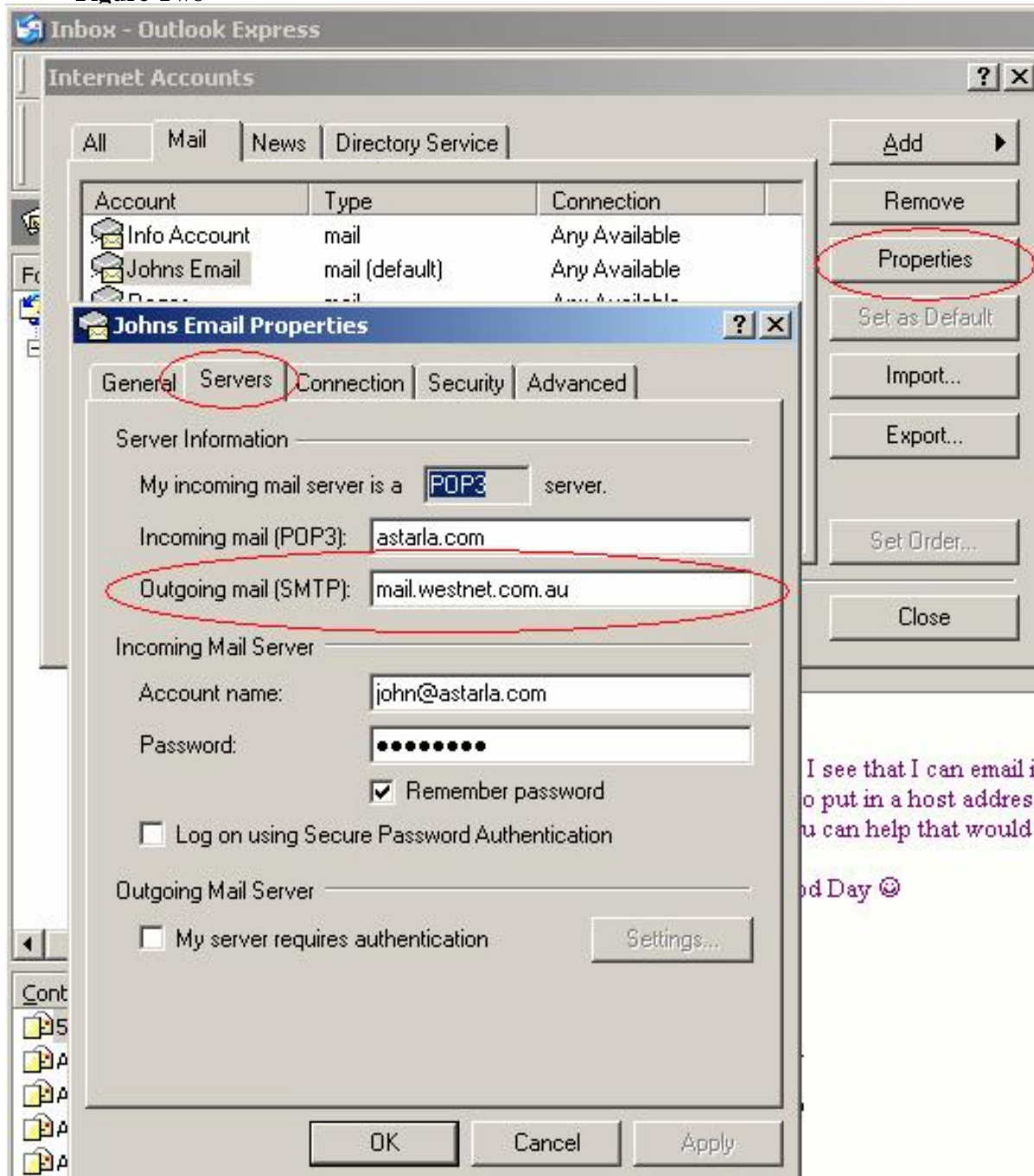
  

Phone	07 5477 0266	Email	john@astarla.com
Fax	07 5477 0882	Mail Host (SMTP)	mail.westnet.com.au
GST Number	19 093 803 537	Signature (Letters etc)	John Stephen
A.C.N.		Title (Accounts Mgr etc)	

**Make This The Default Company On Start Up**     **Include This Company In Web Uploads**

New Company    Rebuild  
Library Templates    System Checks  
Undo    Period End Routines  
Security    Close Off  
Our Company Details    GST Rates  
Backups

Figure Two



I see that I can email it  
to put in a host address  
you can help that would be  
good Day ☺